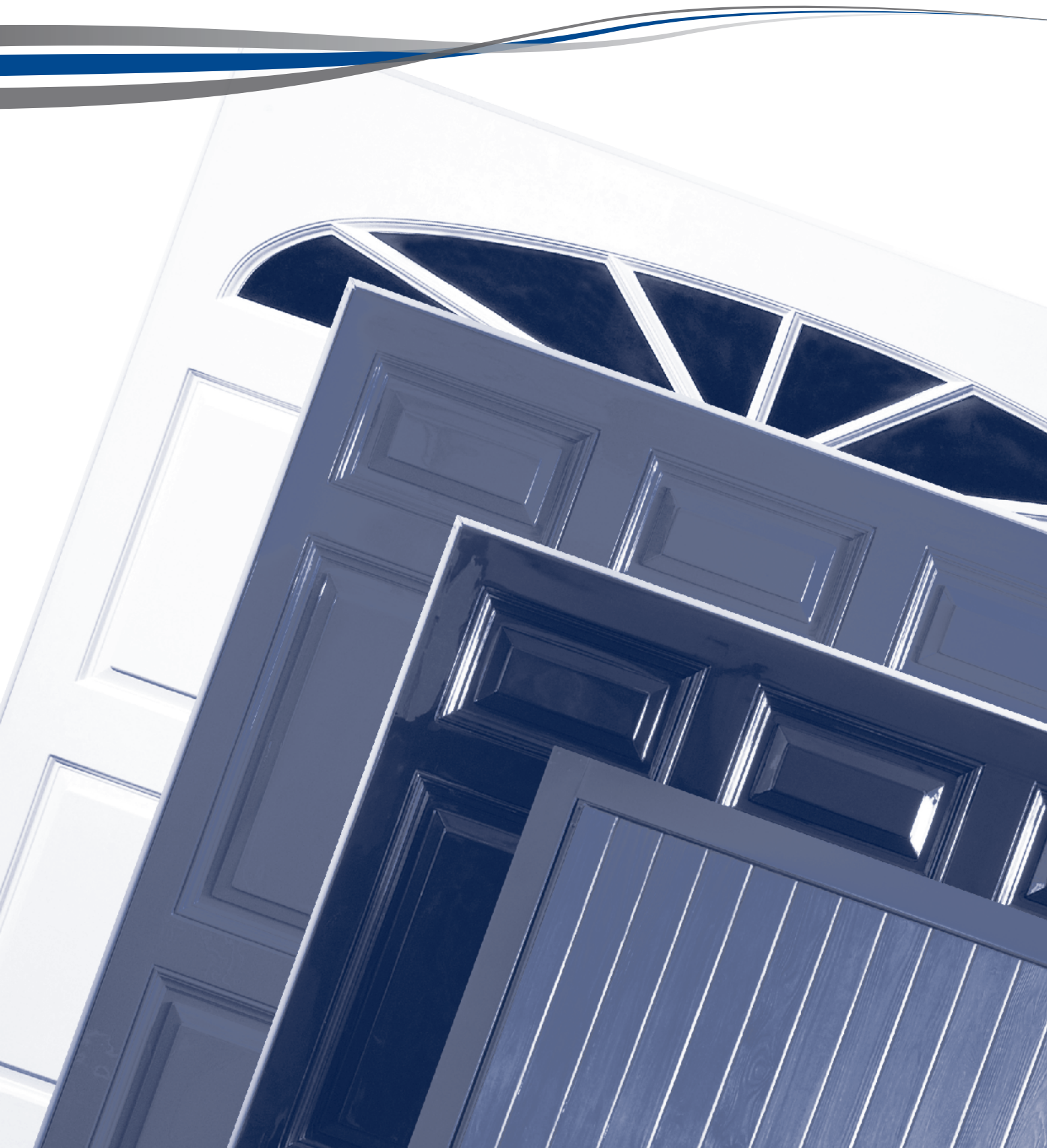


# VALIANT RANGE GARAGE DOOR

PRICE LIST APRIL 2013



**WESSEX**  
**DOORS**



# ONE PIECE UP & OVER GARAGE DOORS

Standard Sizes only



Security Multi-Point Locking



Glazing Options available



Frames available



WIDTH	GEORGIAN & MAYFAIR		WIMBOURNE		PRESIDENT, NEWBURY & SANDHURST	
	CANOPY	RETRACTABLE	CANOPY	RETRACTABLE	CANOPY	RETRACTABLE
2134 x 1931mm (7'0" x 6'6")	1253	1300	1440	1488	1314	1361
2134 x 2136mm (7'0" x 7'0")	1253	1300	1440	1488	1314	1361
2239 x 1981mm (7'5" x 6'6")	1324	1375	1578	1626	1351	1398
2239 x 2136mm (7'5" x 7'0")	1324	1375	1578	1626	1351	1398
2264 x 1981mm (7'6" x 6'6")	1324	1375	1578	1626	1351	1398
2264 x 2136mm (7'6" x 7'0")	1324	1375	1578	1626	1351	1398
2419 x 1981mm (8'0" x 6'6")	1375	1422	1631	1678	1425	1448
2419 x 2136mm (8'0" x 7'0")	1375	1422	1631	1678	1425	1448
4269 x 1931mm (14'0" x 6'6")	-	2523	-	2763	-	2647
4269 x 2136mm (14'0" x 7'0")	-	2523	-	2763	-	2647

## ONE PIECE UP & OVER GARAGE DOORS

## SIDE HINGED

WIDTH	CANTERBURY, LANGLEY, WARWICK & YORK		PURBECK & SHERWOOD		YORK & RIPON
	CANOPY	RETRACTABLE	CANOPY	RETRACTABLE	
2134 x 1931mm (7'0" x 6'6")	1412	1459	1657	1704	1322
2134 x 2136mm (7'0" x 7'0")	1412	1459	1657	1704	1322
2239 x 1981mm (7'5" x 6'6")	1612	1665	1705	1754	1322
2239 x 2136mm (7'5" x 7'0")	1612	1665	1705	1754	1322
2264 x 1981mm (7'6" x 6'6")	1612	1665	1705	1754	1322
2264 x 2136mm (7'6" x 7'0")	1612	1665	1705	1754	1322
2419 x 1981mm (8'0" x 6'6")	1669	1716	1755	1802	1322
2419 x 2136mm (8'0" x 7'0")	1669	1716	1755	1802	1322
4269 x 1931mm (14'0" x 6'6")	-	2870	-	2904	-
4269 x 2136mm (14'0" x 7'0")	-	2870	-	2904	-

### OPTIONS

Option	Per Door Single / Double (>8'0" wide)
Black Windows*	160 / 320
Clear or Stippled Windows type* <b>A</b>	328 / 655
Clear or Stippled Windows type* <b>B</b>	360 / 720
Clear or Stippled Windows type* <b>C</b>	430 / 860
Colour Options available for gloss doors, red (RAL 3020), burgundy (RAL 3004), blue (RAL 5011), green (RAL 6009)	300 / 395
Pearlescent Graphite	
Colour Options available for woodgrain doors, red (RAL 3020), blue (RAL 5011), green (RAL 6009), Anthracite Grey (RAL 7016)	300 / 395
White Flowcoat to rear of door	80 / 140
Brown Flowcoat to rear of door	110 / 200
Side Hinged Left Hand Leaf leading (RH standard, viewed from outside)	70
Side Hinged Pair of Stays	60

### FRAMES

Steel Frames for Up & Over Doors	Per Door Single / Double (>8'0" wide)
White, brown or black	95 / 240

Side hinged doors include a frame as standard.

#### DELIVERY CHARGES

All doors

Delivery charges any quantity of door: **£55.00 NET**

Mainland England, Scotland and Wales only. Northern Ireland, Channel Islands, Isle of Man, and export delivery – charges on application. Delivery charges and VAT to be added to all prices.

\*Please specify leading requirements

# VALIANT G.R.P. GARAGE DOORS

Valiant garage doors are available in standard sizes. Doors are constructed with a white or brown powdercoat galvanised steel chassis that provides a neat edge to the door panels.

Available with canopy or retractable gear and selected styles as side hinged opening.

## SPECIFICATION

### Locking

All Wessex Valiant doors are supplied with secure multi-point locking as standard.

### Frames

Up and over doors can be fitted with a steel frame, side hinged doors include a frame as standard. All frames are pre-fitted to the door prior to delivery for single doors and supplied as a kit for double doors.

## ELECTRIC OPERATORS

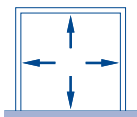
### Electric Operators & Boom Options For Retractable Up & Over Doors

DC-700 (For retractable doors)	370
DC-850 (For retractable doors)	450
Kevlar belt drive	48
Chain drive	0
Medium extended toothed belt / chain drive boom	21
Medium extended toothed Kevlar belt drive boom	74
Long extended chain drive boom (DC-850)	53
Long extended Kevlar belt drive boom (DC-850)	95

### Operator Accessories DC-700/850

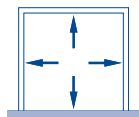
Beam break	70
Beam Break Bracket	15
Wireless bell push	40
Wired bell push	12
Electric key switch control	41
Exterior digital keyless entry pad	93
Emergency release (handle type)	31
External receiver	102
Car cigarette lighter transmitter (3 channel)	58
Mini transmitter (4 channel)	49
Three function wired wall control	37
Impulse socket receiver	72

## SIZING DATA



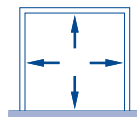
Internal frame size  
On-site timber frame

Width x Height  
(mm x mm)



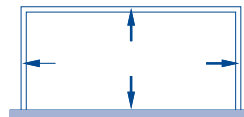
Pre-framed canopy door  
overall frame sizes shown \*

Width x Height  
(mm x mm)



Pre-framed retractable door  
overall frame sizes shown \*

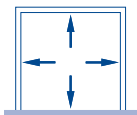
Width x Height  
(mm x mm)



Frame kit for double door  
overall frame sizes shown \*

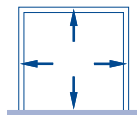
Width x Height  
(mm x mm)

	Width x Height (mm x mm)	Width x Height (mm x mm)	Width x Height (mm x mm)	Width x Height (mm x mm)
7066	2134 x 1981	2244 x 2039	2274 x 2039	-
7070	2134 x 2136	2244 x 2194	2274 x 2194	-
7566	2259 x 1981	2369 x 2039	2399 x 2039	-
7570	2259 x 2136	2369 x 2194	2399 x 2194	-
7666	2286 x 1981	2394 x 2039	2424 x 2039	-
7670	2286 x 2136	2394 x 2194	2424 x 2194	-
8066	2439 x 1981	2549 x 2039	2579 x 2039	-
8070	2439 x 2136	2549 x 2194	2579 x 2194	-
1466	4269 x 1981	-	-	4409 x 2039
1470	4269 x 2136	-	-	4409 x 2194



Pre-framed side hinged door  
Internal frame size

Width x Height  
(mm x mm)



Pre-framed side hinged door  
overall frame sizes shown \*

Width x Height  
(mm x mm)

	Width x Height (mm x mm)	Width x Height (mm x mm)
7066	2114 x 1981	2234 x 2041
7070	2114 x 2136	2234 x 2196
7566	2239 x 1981	2359 x 2041
7570	2239 x 2136	2359 x 2196
7666	2264 x 1981	2384 x 2041
7670	2264 x 2136	2384 x 2196
8066	2419 x 1981	2539 x 2041
8070	2419 x 2136	2539 x 2196

\*No fitting clearance allowed. If door is fitted between the brickwork a minimum of 10 mm clearance over the width and 5 mm over the height should be added to the overall frame size when selecting the door.

### PRICES & NOTES

All Prices are in £ Sterling and exclude VAT & delivery  
Illustrations in this brochure are intended as a guide only to product styles and profiles. Handle positions will vary dependent upon the style, operation and size of the door. Side and top stiles (the area around a particular design) may vary in width and height dependent upon the size, even on doors of the same style.

### DELIVERY CHARGES

All doors

Delivery charges any quantity of door: **£55.00 NET**

Mainland England, Scotland and Wales only. Northern Ireland, Channel Islands, Isle of Man, and export delivery – charges on application. Delivery charges and VAT to be added to all prices.

CI/SfB			
127	(31.56)	X	

Date: 21st April 2013 Issue 1

Please Note:

- As Wessex GRP Products' policy is one of continuous improvement, we reserve the right to change the specification or withdraw any products without prior notice.
- All details are correct at time of going to press. E & OE.

Product Guarantee – WESSEX GRP PRODUCTS LIMITED. (Wessex)

Subject to conditions set out below;

- Wessex garage doors are guaranteed against any form of manufacturing defect for a period of 2 years from the date of original purchase.
- Wessex electric operators are guaranteed against any form of manufacturing defect for a period of 2 years for mechanical elements, motors and transformers and for a period of 2 years for other electronic and radio equipment.
- The Exterior finish is guaranteed to provide an effective weatherproof membrane which will resist perforation of the substrate from the weather side due to corrosion for the periods indicated below.  
2 years - GRP
- Colour change or fade to the exterior surface will be limited and uniform for a period of 2 years.

#### CONDITIONS

- During the comprehensive 2 year guarantee period Wessex GRP Products Limited undertake to repair or replace (at its discretion), and without charge, products or components which have suffered any form of manufacturing defect. Claims must be notified within 3 days from the date of delivery or within a reasonable time after discovery of any defect.
- Products covered by these guarantees must have been purchased through an authorised Wessex garage door distributor or as original equipment attached to a newly built dwelling.
- The warranties shall apply for normal use only. Normal use constitutes no more than 5 operations (open/close cycles) per day.
- The warranties offered attach to the Wessex product only and no consequential damages will apply no matter how caused.
- No liability will be accepted as a result of normal wear and tear, incorrect storage, incorrect handling, faulty installation, incorrect use, non adherence to routine maintenance schedule or willful damage..
- Claims under this guarantee must be made through the original supplier and accompanied by relevant documentation indicating the date of purchase (e.g. receipt).
- Wessex GRP Products Limited maximum liability shall be the original purchase price inclusive of Value Added Tax at the rate prevailing when supplied.
- Any product which is the subject of a claim:
  - must have been correctly installed in accordance with the installation instructions supplied and thereafter properly maintained by a suitably experienced engineer on a regular basis as set out in the Maintenance and Operating Instructions provided with every door. (Additional copies of these instructions are available by calling 01942 832 355). We recommend that regular maintenance is provided by a suitably experienced engineer. See your Yellow Pages for your local Wessex Garage Door or AGDS specialist.
  - must have the manufacturers reference number still intact (found on the barcode label on the door)
  - must not have been modified in any way.
- Claims will not be accepted where the cause is due to:
  - impact or mechanical damage suffered during or following installation, e.g scratches, indentations, tears, scuffs or other surface abrasion.
  - damage or discolouration caused by contact with any form of caustic, abrasive or corrosive substance, fumes, bird droppings, fire, smoke, floodwater, salts, acids, or from exposure to abnormal atmospheric pollution.
- This guarantee excludes normal wear and tear on items such as cones, cables, spindles, lock cylinders, hinges or springs.

- Only Wessex original spare parts must be used when required. The use of non-Wessex parts shall invalidate this guarantee. Warranty period for replacement parts is 6 months or the balance of the original warranty period if greater.
- The Exterior Finish Guarantee applies only to the weatherside surface and where more than 5% of the surface area of the door is affected. Surfaces must be freely exposed to washing by rainfall and kept clear of accumulated dirt and debris and given equal exposure to local environmental conditions and consistent natural lighting conditions across the face of the door. Special attention is drawn to Clause (9) (i).
- The guarantee period for electric operators excludes batteries, fuses and light bulbs.
- Parts replaced free of charge become the property of Wessex GRP Products Limited.
- Attempted repairs by non-qualified individuals shall invalidate this guarantee.
- The specific terms of this guarantee shall only apply to products purchased on or after August 2010 within the UK and Eire.
- Wessex garage doors and associated products are sold subject to the Wessex GRP Products Limited Standard Terms and Conditions of Sale, copies of which are available upon request. Wessex GRP Products Limited shall not be liable as a result of any representation, implied warranty or other term or condition or for any consequential loss or damage, costs, expenses or other claims whatsoever except as expressly set out in these Terms and Conditions of Sale.

#### General Advice

##### Door Cleaning

Periodically clean the door panel using warm water and a soft cloth or sponge. Allow to dry naturally. Never use detergent, abrasive, caustic or solvent based cleaners as they may damage the door surface. Bird droppings should be removed immediately as these can be particularly caustic.

##### Customer Maintenance

Moving parts should be lubricated regularly to ensure smooth operation. Every six months visually inspect all wear items (including cables) for signs of wear. If wear is detected we recommend you contact your local Wessex approved service engineer to arrange for a replacement. Garage door springs are under extreme tension and should only be repaired or replaced by a suitably qualified engineer.

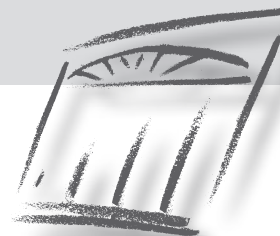
#### Other performance issues affecting Wessex. garage doors are:

Wessex G.R.P. doors are individually handcrafted products manufactured to specific customer order. Due to the nature of the product and the hand finishing processes used they may occasionally display small blemishes which do not detract from the overall appearance of the product. These are regarded as being within manufacturers tolerance when such blemishes are not visible to the naked eye when viewed from a distance of three metres. Similarly, Woodgrain effect products will, like the natural material, display colour variations across their surface and colour will vary from door to door. Ordering doors to match helps reduce the variation but will not eradicate it entirely.

Translucency of the door panel may vary when viewed from the inside on a bright day due to variations in laminate thickness. This does not represent a manufacturing defect and overall performance is not affected.

Size and Deflection - the natural curing process does not affect the ultimate product size and a tolerance of  $\pm 6$ mm on both height and width is deemed acceptable. One piece up and over doors in the 'open' position will display a level of vertical deflection or 'sag' across the width of the panel and up to 6mm per linear metre is within design tolerance.

These terms and conditions do not affect your statutory rights.



**wessex**  
DOORS